

W9325STXRIB

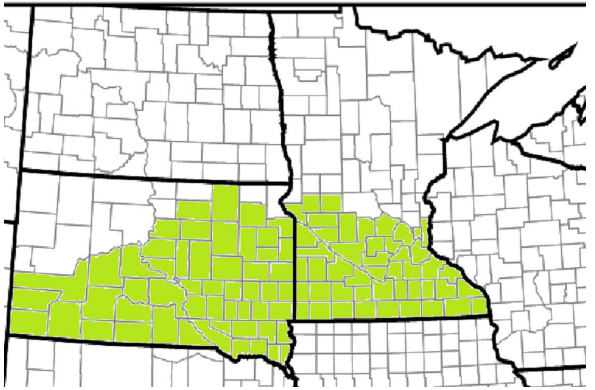
Family Hybrids: W81028VT2RIB, W6300RR









102 RM

5% RIB

- Good Goss's Wilt tolerance
- Excellent drydown capability
- Dual purpose potential

AGRONOMIC CHARACTERISTICS	NAME OF A MAP
EMERGENCE	9
EARLY GROWTH	9
GDU'S TO SILK	1285
EARLY FLOWER	7
BRITTLE STALKS	8
STALK STRENGTH	8
ROOT STRENGTH	7
DROUGHT TOLERANCE	9
GDU'S TO BLACK LAYER	2475
BLACK LAYERS EARLY	8
DRYDOWN	8
EAR RETENTION	8
PLANT HEALTH	8
POPULATION TOLERANCE	32000
CORN AFTER CORN	Recommended
EAR FLEX	Semi-Flex
TEST WEIGHT	8
KERNEL ROWS	16-20
COB COLOR	Red
SHANK LENGTH	Medium
PLANT HEIGHT	Medium
LEAF ANGLE	Semi-Upright



DISEASE TOLERANCE	SOIL RECOMMENDATIONS	TECHNOLOGY
NORTHERN LEAF BLIGHT	7	 
SOUTHERN LEAF BLIGHT	7	
GRAY LEAF SPOT	7	 
EYESPOT	0	
LEAF ANTHRACNOSE	7	 
COMMON RUST	8	
GOSS'S WILT	6	 
	COARSE SOIL (SAND)	Highly Recommended
	MED. COARSE SOIL (SILT)	Highly Recommended
	FINE SOIL (LOAM)	Excellent
	MED. FINE SOIL (CLAY)	Highly Recommended
	IRRIGATED COARSE SOIL	Highly Recommended