

# W8195VT2RIB

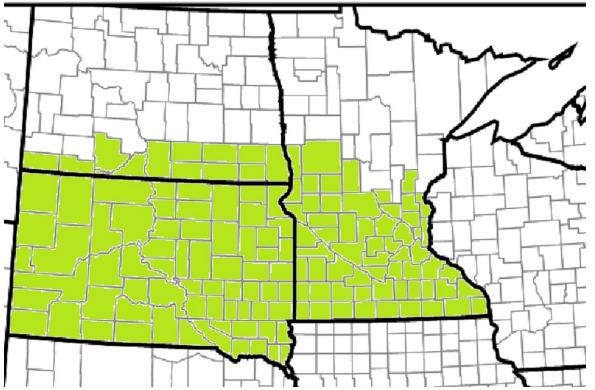
Family Hybrids: W6193RR



95 RM

5% RIB

- Best positioned on stress prone acres
- Excels in low yield environments
- Monitor late season stalk health south

AGRONOMIC CHARACTERISTICS	NAME OF A MAP
EMERGENCE	7
EARLY GROWTH	7
GDU'S TO SILK	1285
EARLY FLOWER	7
BRITTLE STALKS	7
STALK STRENGTH	7
ROOT STRENGTH	9
DROUGHT TOLERANCE	9
GDU'S TO BLACK LAYER	2330
BLACK LAYERS EARLY	8
DRYDOWN	9
EAR RETENTION	9
PLANT HEALTH	8
POPULATION TOLERANCE	24000
CORN AFTER CORN	Recommended
EAR FLEX	Semi-Flex
TEST WEIGHT	8
KERNEL ROWS	14-18
COB COLOR	Red
SHANK LENGTH	Medium
PLANT HEIGHT	Medium
LEAF ANGLE	Semi-Upright



DISEASE TOLERANCE	SOIL RECOMMENDATIONS	TECHNOLOGY
NORTHERN LEAF BLIGHT	7	 
SOUTHERN LEAF BLIGHT	6	
GRAY LEAF SPOT	4	
EYESPOT	7	
LEAF ANTHRACNOSE	8	
COMMON RUST	8	
GOSS'S WILT	6	
COARSE SOIL (SAND)	Excellent	
MED. COARSE SOIL (SILT)	Highly Recommended	
FINE SOIL (LOAM)	Recommended	
MED. FINE SOIL (CLAY)	Recommended	
IRRIGATED COARSE SOIL	Highly Recommended	