

W1184NRX

MANAGEMENT GUIDELINES

- Rps 3a+1a provides flexibility for Phytophthora Root Rot protection
- Good west to east movement across Wensman territories
- Performance carries west into South Dakota
- Characteristics allow for broad placement

PRODUCT STRENGTHS

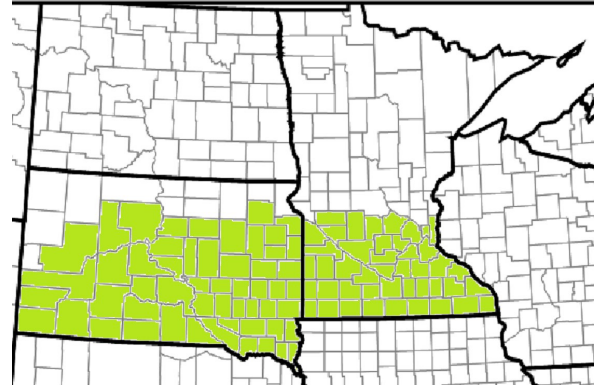
- Performance for maturity class
- BSR resistant
- Excellent standbaility
- White mold tolerance

PHENOTYE DESCRIPTION

MATURITY GROUP
RELATIVE MATURITY
VALUE ADDED TRAIT
SOYBEAN CYST NEMATODE
SOYBEAN CYST NEMATODE GENE
PHYTOPHTHORA GENE
FLOWER
PUBESCENCE
POD WALL
HILUM
PLANT TYPE
PLANT HEIGHT
APPROXIMATE SEED SIZE
OIL
PROTEIN

1
 1.800
 SCN/Xtend
 MR3, MR14
 PI 88.788
 Rps 3a+1a
 Purple
 Gray
 Brown
 Buff
 M/TH
 MT
 Excellent
 M
 M

NAME OF A MAP



PRODUCTION

EMERGENCE 9.000
STANDABILITY 9.000
NO-TILL/REDUCED TILL Highly Recommended
IRON CHLOROSIS (IDC) 8.000
STRESS TOLERANCE 9.000
COARSE SOIL (SANDS) Excellent
MED COARSE SOIL (SILT) Excellent
FINE SOIL (LOAM) Excellent
MED FINE SOIL (CLAY) Xtend

AGRONOMIC DISEASE

PPR FIELD TOLERANCE 8.000
SCLEROTINA WHITE MOLD (SWM) 8.500
BROWN STEM ROT (BSR) 10.000
SUDDEN DEATH SYNDROME (SDS) 8.000