

W1173NRX

MANAGEMENT GUIDELINES

- Very good western adaptation
- Moves south in late group I zone
- Great choice for all W3170NR2 acres
- IDC tolerance goes across W3200NR2 acres

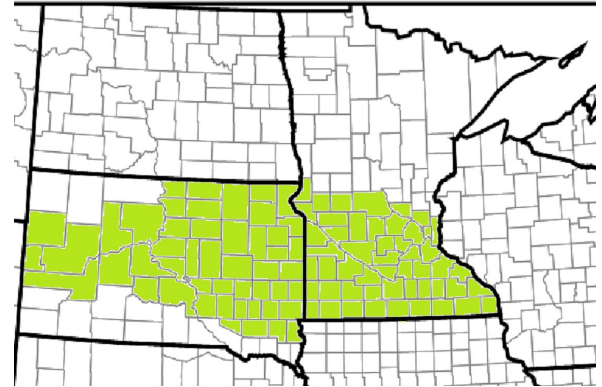
PRODUCT STRENGTHS

- Performance for maturity class
- Moderate resistance for BSR
- SCN protection
- Chemistry option for Glyphosate resistant weeds

PHENOTYPE DESCRIPTION

MATURITY GROUP	1
RELATIVE MATURITY	1.700
VALUE ADDED TRAIT	SCN/Xtend
SOYBEAN CYST NEMATODE	R3, MR14
SOYBEAN CYST NEMATODE GENE	PI 88.788
PHYTOPHTHORA GENE	Rps 1c
FLOWER	Purple
PUBESCENCE	Gray
POD WALL	Brown
HILUM	Imp. Black
PLANT TYPE	M/B
PLANT HEIGHT	M
APPROXIMATE SEED SIZE	Excellent
OIL	M
PROTEIN	M

NAME OF A MAP



PRODUCTION

EMERGENCE	9.000
STANDABILITY	8.000
NO-TILL/REDUCED TILL	Excellent
IRON CHLOROSIS (IDC)	8.000
STRESS TOLERANCE	9.000
COARSE SOIL (SANDS)	Excellent
MED COARSE SOIL (SILT)	Excellent
FINE SOIL (LOAM)	Excellent
MED FINE SOIL (CLAY)	Xtend

AGRONOMIC DISEASE

PPR FIELD TOLERANCE	8.000
SCLEROTINA WHITE MOLD (SWM)	7.500
BROWN STEM ROT (BSR)	9.000
SUDDEN DEATH SYNDROME (SDS)	7.000