

W1165NRX

MANAGEMENT GUIDELINES

- Widely adaptable to multiple soil types
- Fits W3160NR2 and W3178R2 acres
- Exhibits northern and southern movement
- Works across IDC environments like W3160NR2

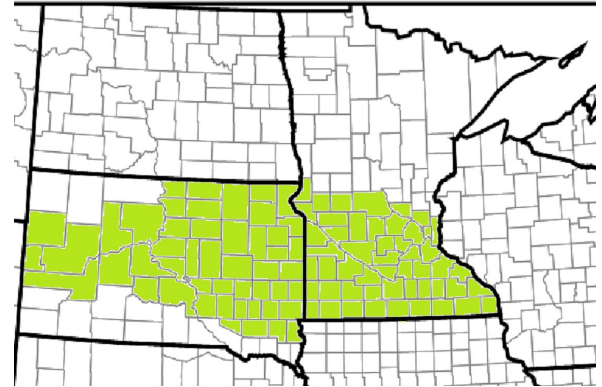
PRODUCT STRENGTHS

- Performance for maturity class
- SCN protection
- BSR moderate resistance
- SDS tolerance

PHENOTYPE DESCRIPTION

MATURITY GROUP	1
RELATIVE MATURITY	1.600
VALUE ADDED TRAIT	SCN/Xtend
SOYBEAN CYST NEMATODE	R3, MR14
SOYBEAN CYST NEMATODE GENE	PI 88.788
PHYTOPHTHORA GENE	Rps 1c
FLOWER	Purple
PUBESCENCE	Light Tawny
POD WALL	Brown
HILUM	Black
PLANT TYPE	M/B
PLANT HEIGHT	M
APPROXIMATE SEED SIZE	Excellent
OIL	M
PROTEIN	M

NAME OF A MAP



PRODUCTION

EMERGENCE	9.000
STANDABILITY	7.500
NO-TILL/REDUCED TILL	Excellent
IRON CHLOROSIS (IDC)	7.500
STRESS TOLERANCE	9.000
COARSE SOIL (SANDS)	Excellent
MED COARSE SOIL (SILT)	Excellent
FINE SOIL (LOAM)	Excellent
MED FINE SOIL (CLAY)	Xtend

AGRONOMIC DISEASE

PPR FIELD TOLERANCE	8.000
SCLEROTINA WHITE MOLD (SWM)	7.000
BROWN STEM ROT (BSR)	9.000
SUDDEN DEATH SYNDROME (SDS)	8.000