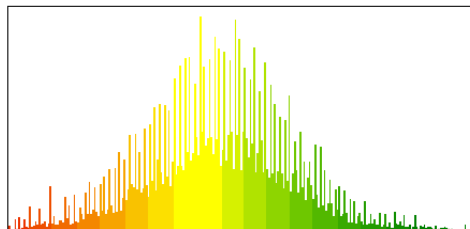
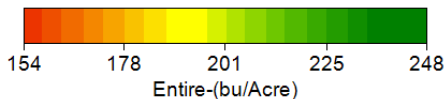


Cooperator: **Lauris Johnshoy**  
 Planting Date: **5/10/2017**  
 Harvest Date: **10/23/2017**  
 Planted Pop: **34000**  
 Tillage: **Conventional**  
 Previous Crop: **Soybeans**  
 Irrigated?   
 Rows/Entry: **12**  
 Row Spacing: **22"**

### FIELD YIELD POTENTIAL



Average: 195.7 Area: 6.76 Ac  
 Std Dev : 14.7 Total: 1324 bu



Loam		Bu/Acre	Moisture	Acres
1	W80928VT2RIB	195.80	18.26	0.80
2	W80931VT2RIB	185.09	17.18	0.82
3	W80943VT2RIB	187.46	17.12	0.83
4	W80945-3110A	194.75	17.95	0.84
5	W80947VT2RIB	202.52	18.57	0.82
6	W80972VT2RIB	206.27	18.70	0.77
7	W80993VT2RIB	194.85	18.52	0.73
8	W81007VT2RIB	199.55	20.31	0.65
Silt Loam		Bu/Acre	Moisture	Acres
1	W80928VT2RIB	203.97	17.97	0.11
2	W80931VT2RIB	194.66	17.06	0.10
3	W80943VT2RIB	192.38	17.06	0.09
4	W80945-3110A	191.32	18.00	0.09
5	W80947VT2RIB	196.88	18.49	0.11
6	W80972VT2RIB	206.12	18.86	0.16
7	W80993VT2RIB	189.52	18.59	0.20
8	W81007VT2RIB	196.44	20.68	0.22

Key Points to Consider:

**Entire Yield**

Entire	Bu/Acre	Moisture	Acres
1 W80928VT2RIB	196.75	18.23	0.90
2 W80931VT2RIB	186.10	17.16	0.91
3 W80943VT2RIB	187.93	17.11	0.91
4 W80945-3110A	194.43	17.95	0.92
5 W80947VT2RIB	201.89	18.56	0.92
6 W80972VT2RIB	206.24	18.72	0.91
7 W80993VT2RIB	193.78	18.54	0.92
8 W81007VT2RIB	198.77	20.40	0.85

**Soil**

Loam	Bu/Acre	Moisture	Acres
1 W80928VT2RIB	195.80	18.26	0.80
2 W80931VT2RIB	185.09	17.18	0.82
3 W80943VT2RIB	187.46	17.12	0.83
4 W80945-3110A	194.75	17.95	0.84
5 W80947VT2RIB	202.52	18.57	0.82
6 W80972VT2RIB	206.27	18.70	0.77
7 W80993VT2RIB	194.85	18.52	0.73
8 W81007VT2RIB	199.55	20.31	0.65

**Silt Loam**

Bu/Acre	Moisture	Acres	
1 W80928VT2RIB	203.97	17.97	0.11
2 W80931VT2RIB	194.66	17.06	0.10
3 W80943VT2RIB	192.38	17.06	0.09
4 W80945-3110A	191.32	18.00	0.09
5 W80947VT2RIB	196.88	18.49	0.11
6 W80972VT2RIB	206.12	18.86	0.16
7 W80993VT2RIB	189.52	18.59	0.20
8 W81007VT2RIB	196.44	20.68	0.22

**Topography**

Bottoms	Bu/Acre	Moisture	Acres
1 W80928VT2RIB	184.71	18.10	0.19
2 W80931VT2RIB	175.69	17.06	0.21
3 W80943VT2RIB	186.37	17.14	0.22
4 W80945-3110A	195.78	17.68	0.24
5 W80947VT2RIB	204.37	18.08	0.30
6 W80972VT2RIB	207.18	18.46	0.36
7 W80993VT2RIB	188.41	18.29	0.35
8 W81007VT2RIB	195.23	20.33	0.32

**Hill Tops**

Bu/Acre	Moisture	Acres	
1 W80928VT2RIB	204.74	18.60	0.34
2 W80931VT2RIB	193.02	17.45	0.33
3 W80943VT2RIB	189.62	17.12	0.33
4 W80945-3110A	195.84	18.05	0.32
5 W80947VT2RIB	203.34	18.95	0.31
6 W80972VT2RIB	206.60	18.95	0.30
7 W80993VT2RIB	194.37	18.59	0.28
8 W81007VT2RIB	197.26	20.23	0.25

**Side Hills**

Bu/Acre	Moisture	Acres	
1 W80928VT2RIB	195.66	17.97	0.39
2 W80931VT2RIB	185.73	16.97	0.39
3 W80943VT2RIB	187.46	17.08	0.38
4 W80945-3110A	192.47	18.04	0.38
5 W80947VT2RIB	198.17	18.65	0.32
6 W80972VT2RIB	204.41	18.92	0.26
7 W80993VT2RIB	192.81	18.91	0.22
8 W81007VT2RIB	197.19	20.87	0.21

**Yield**

Marginal	Bu/Acre	Moisture	Acres
1 W80928VT2RIB	194.48	18.25	0.65
2 W80931VT2RIB	182.21	17.18	0.61
3 W80943VT2RIB	184.57	17.13	0.58
4 W80945-3110A	190.81	18.00	0.47
5 W80947VT2RIB	198.42	18.67	0.51
6 W80972VT2RIB	203.44	18.81	0.54
7 W80993VT2RIB	190.09	18.58	0.55
8 W81007VT2RIB	196.31	20.39	0.57

**Productive**

Bu/Acre	Moisture	Acres	
1 W80928VT2RIB	202.50	18.27	0.50
2 W80931VT2RIB	192.38	17.13	0.47
3 W80943VT2RIB	191.74	17.06	0.57
4 W80945-3110A	196.53	17.92	0.70
5 W80947VT2RIB	204.61	18.54	0.65
6 W80972VT2RIB	209.54	18.66	0.58
7 W80993VT2RIB	198.51	18.50	0.58
8 W81007VT2RIB	201.73	20.39	0.55

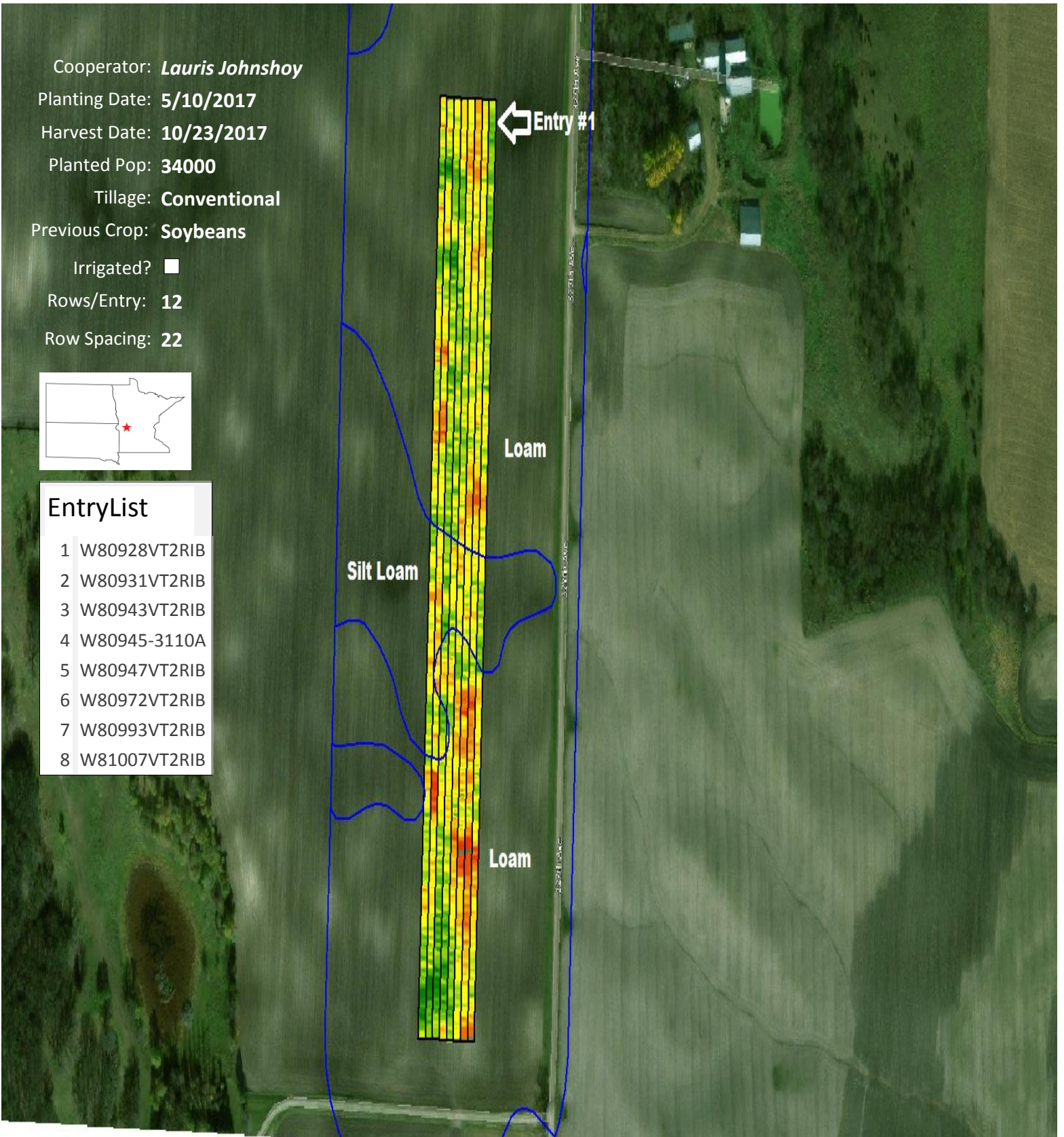


Cooperator: **Lauris Johnshoy**  
 Planting Date: **5/10/2017**  
 Harvest Date: **10/23/2017**  
 Planted Pop: **34000**  
 Tillage: **Conventional**  
 Previous Crop: **Soybeans**  
 Irrigated?   
 Rows/Entry: **12**  
 Row Spacing: **22**



**EntryList**

1	W80928VT2RIB
2	W80931VT2RIB
3	W80943VT2RIB
4	W80945-3110A
5	W80947VT2RIB
6	W80972VT2RIB
7	W80993VT2RIB
8	W81007VT2RIB



Key Points to Consider: